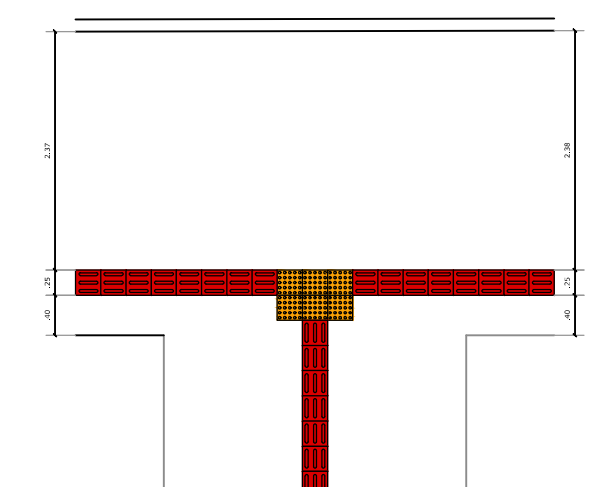
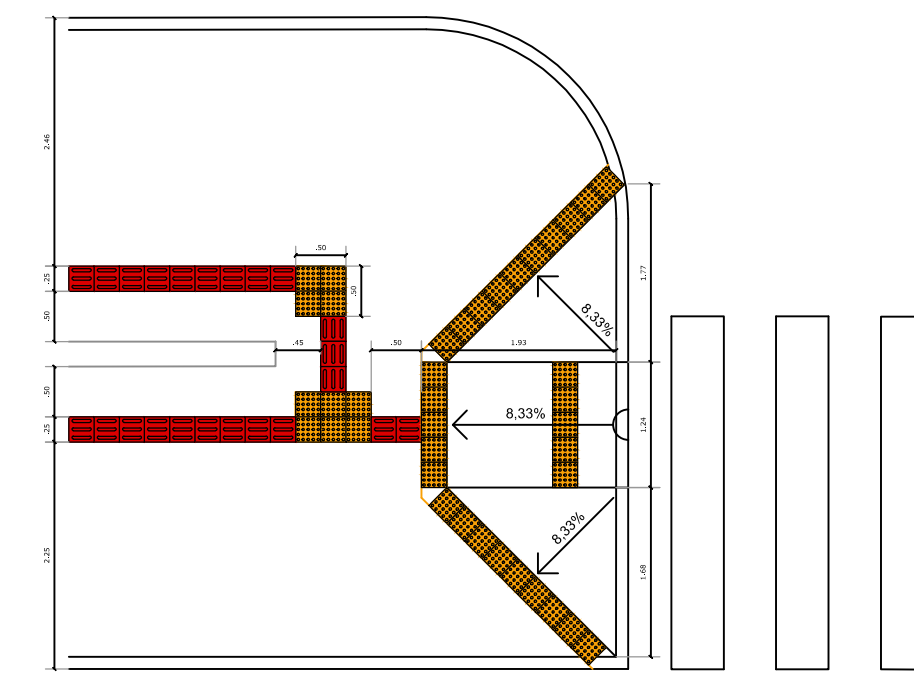


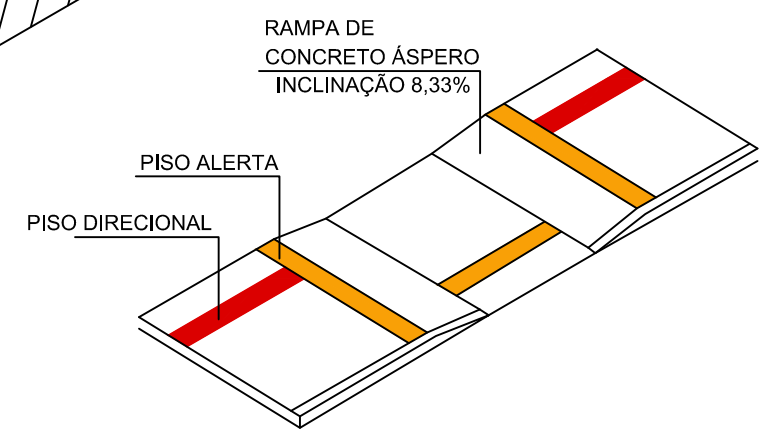
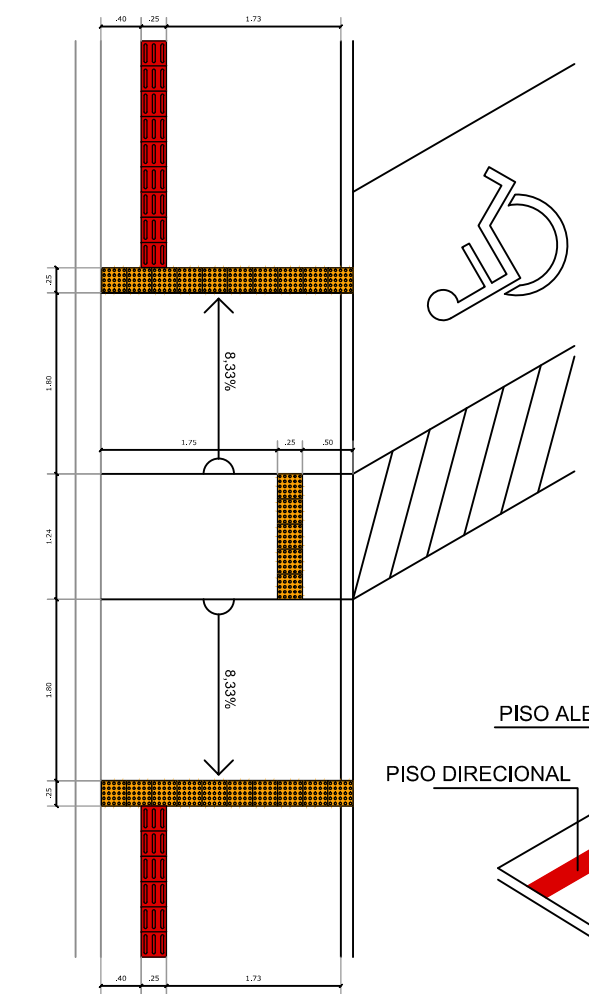
DETALHE 1
Esc.: 1 : 75



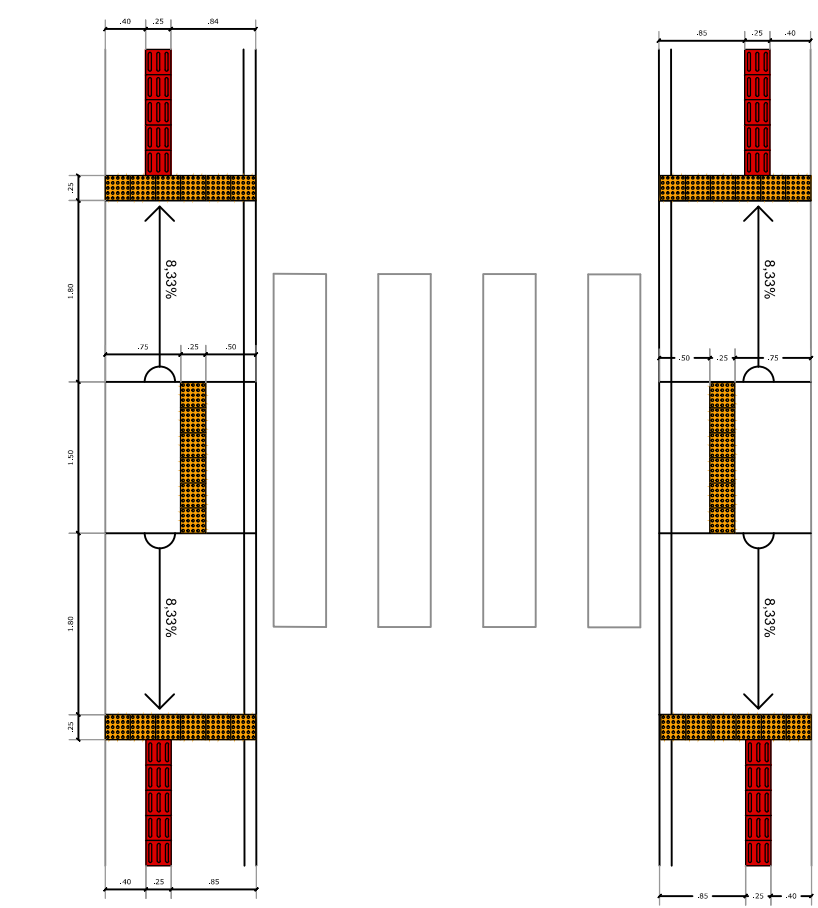
DETALHE 2
Esc.: 1 : 75



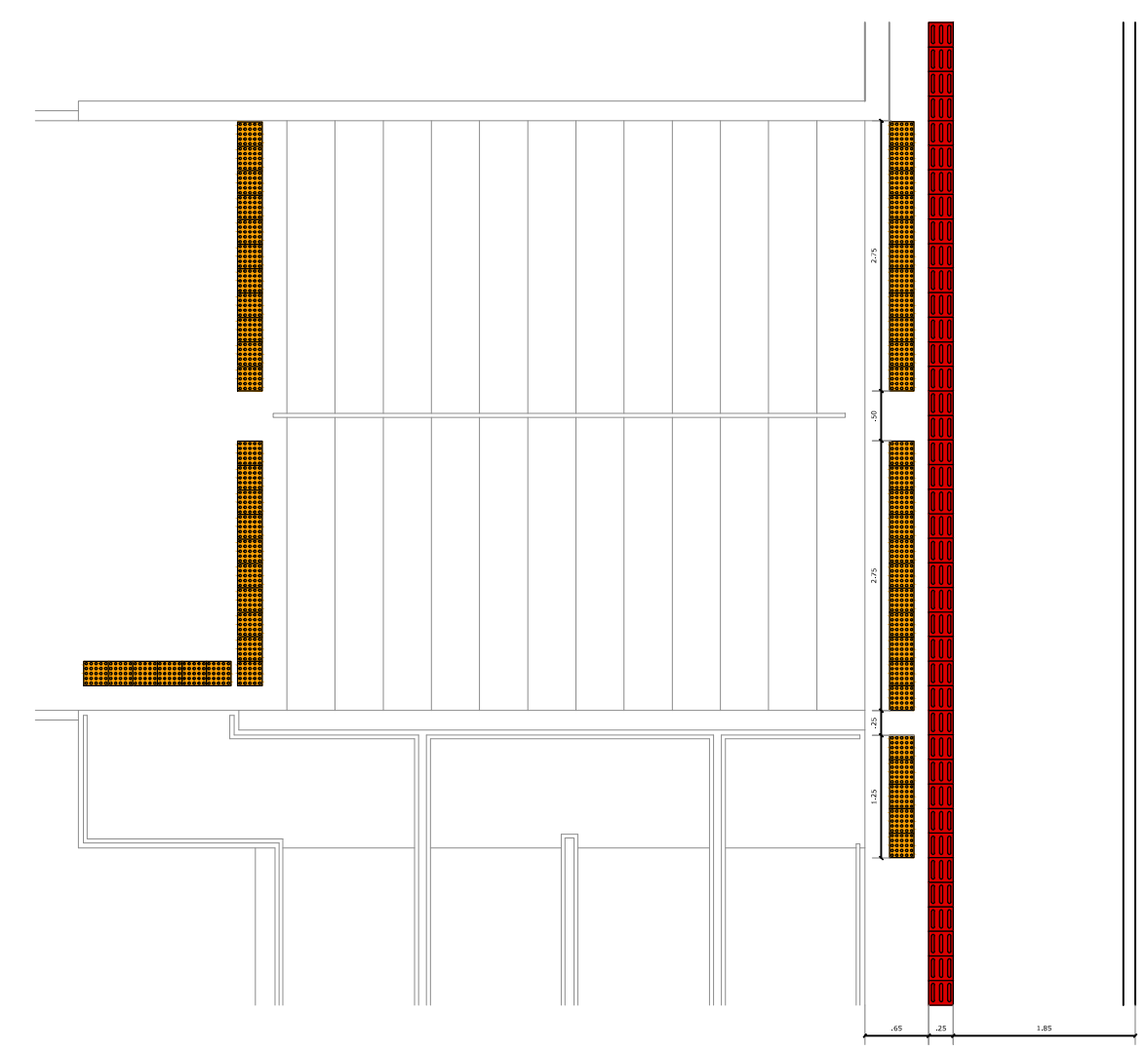
DETALHE 3
Esc.: 1 : 75



DETALHE 4
Esc.: 1 : 75

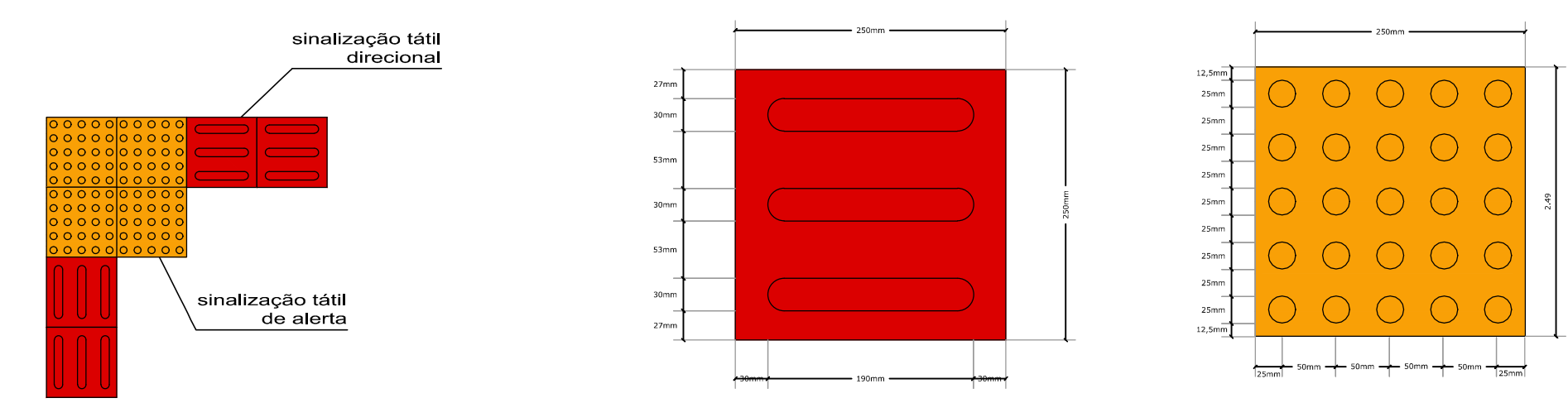


DETALHE 5
Esc.: 1 : 75



DETALHE 6
Esc.: 1 : 75

SINALIZAÇÃO PISOS TÁTEIS
Esc.: 1 : 300



DETALHAMENTO PISOS TÁTEIS
Esc.: s/escala

washington henrique madrid
arquiteto e urbanista - cau A165289-3
rua silveira martins, 617 - centro - erechim / rs
54 99916 4995 washington.madrid@hotmail.com

OBRA
PROJETO DE REVITALIZAÇÃO URBANÍSTICA
PRAÇA DA GRUTA - CIDADE DE PAULO BENTO - RS
PAVIMENTAÇÃO

CONTRATANTE
MUNICÍPIO DE PAULO BENTO
PREFEITO GABRIEL GEVINSKI

RESPONSÁVEL TÉCNICO
WASHINGTON HENRIQUE MADRID
ARQUITETO E URBANISTA - CAU A165289-3
DATA JUNHO / 2023 ESCALA INDICADA